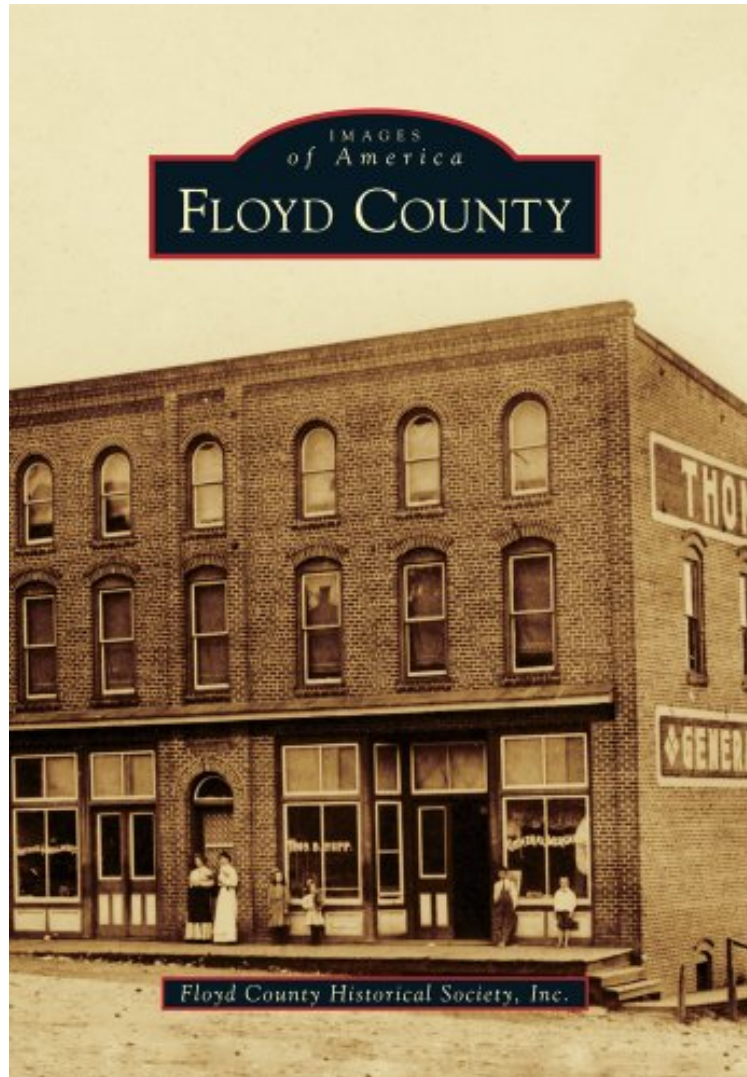


Floyd County (Images of America)

Floyd County Historical Society Inc.
*DOC | *audiobook | ebooks | Download PDF | ePub*



[Download](#)

[Read Online](#)

#1941635 in Books 2012-09-17 2012-09-17Original language:EnglishPDF # 1 9.25 x .31 x 6.50l, .65 #File Name: 0738592714128 pages | File size: 40.Mb

Floyd County Historical Society Inc. : Floyd County (Images of America) before purchasing it in order to gage whether or not it would be worth my time, and all praised Floyd County (Images of America):

0 of 0 people found the following review helpful. Five StarsBy Don G. PriceAn essential book to study the history of Floyd, VA.0 of 0 people found the following review helpful. Well rounded presentationBy Keith LentzNicely done with a wide variety of photos of different aspects of Floyd County life, especially early 1900's.

Once a Kanawha hunting ground, the area that became Floyd County in 1831 was settled by people of English, German, Scots-Irish, French, and African descent, who established scattered farming communities. Agriculture was

supplemented by work at sawmills and gristmills, distilling, storekeeping, and small-scale manufacturing and mining. Social life centered on family, church, and schools. Through the first half of the 20th century, full-time farming diminished as automobiles and improved roads gave access to garment factories and other industries within Floyd and adjoining counties, and the population declined sharply from a peak of 15,388 in 1900. Today, the population has rebounded with an influx of artisans, musicians, entrepreneurs, immigrant workers, retirees, and young families attracted by the countys natural beauty and quality of life. Prominent Floyd County natives include NASCAR pioneer Curtis Turner and Rear Adm. Robley Evans.

About the AuthorThe Floyd County Historical Society was formed in 1976. Incorporated in 2004, the society maintains a museum and archive at the former Ridgemont Hospital building in Floyd. In Floyd County, images from the historical societys archive and private collections depict residents at home, at work, at play, and at worship from the mid-1800s through the 1950s.